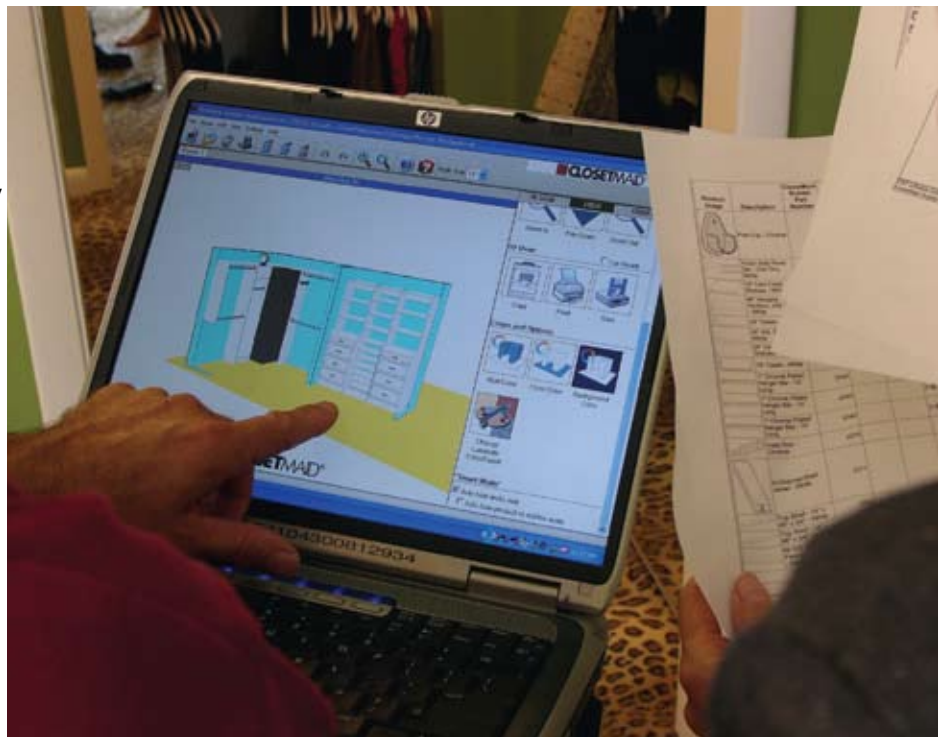




Homebuyers' growing interest in home storage and organization means you can profit by working with a company that offers:

- the most complete line of wire and laminate storage systems
- the leading brand at retail
- a custom closet design program that can help you sell upgrades to your buyers, at no additional cost
- the nation's largest installing dealer network



ClosetMaid products give you greater scheduling flexibility. Since our products are completely finished, there's no need for painting sub-contractors. Plus, our wire and laminate storage products are designed to install quickly, either before or after the carpeting goes in.



ClosetMaid storage and organization systems can enhance profit opportunities in every area of the home.





Chocolate Pear

When the presentation is compelling and the price is right, your buyers will be ready to upgrade to a premium storage system--the kind you can offer with ClosetMaid's MasterSuite laminate system. MasterSuite can be designed to fit any home plan or style, with solutions for every room of the house. MasterSuite can also be combined with our ventilated shelving systems and is guaranteed for life by our Free Replacement Policy.

MasterSuite



Antique White



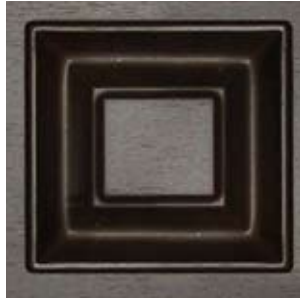
Clean White



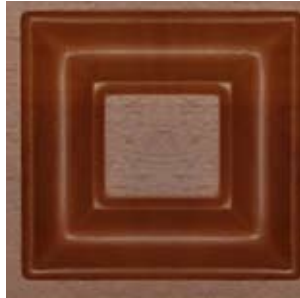
Candlelight

Custom storage options provide profit potential

MasterSuite brings an elegant sense of order and affordable sophistication to every room of your home.



Chocolate Pear



Warm Cognac



Candlelight



Antique White



Clean White
(Raised and Flat Panel)

*Not actual drawer/door profile. Finish representation only.

MasterSuite's five finishes and accessories offer profit potential in the closet, the kitchen or the garage. Chocolate Pear, Warm Cognac, Candlelight, and Antique White raised-panel finishes, plus raised-panel or flat-front finishes in Clean White, give you options to meet your customers' preferences. The beauty of these storage systems is matched with durable construction and quality European hardware.



Laminate Specifications

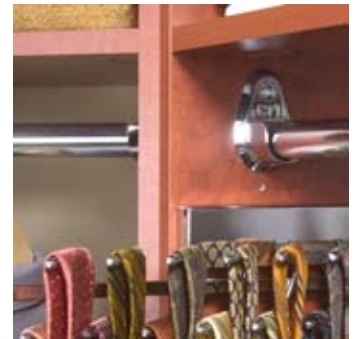
- Upper storage shelf thickness: 3/4" (19mm)
- Other shelves: 5/8" (15.8mm)
- Edge banding: .039" (1mm) PVC
- Hang Rod: 1" (25mm) diameter by 20 gauge epoxy-coated tubular steel
- For detailed specifications call: 1-800-221-0641



Oil Rubbed Bronze
(Full Accessories Line)



Satin Chrome
(Handles Only)



Chrome
(Full Accessories Line)

Elegant and sophisticated

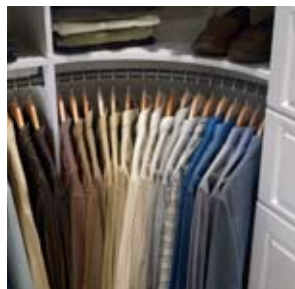
MasterSuite



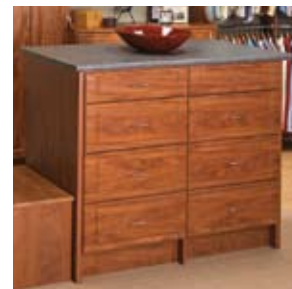
Cabinet Doors offer function and style.



Designer Baskets in white and chrome store anything from produce to linens.



Corner Shelves maximize space, while a Corner Rounder lets hangers slide unobstructed.



Center Island Cabinets and Benches add drawer and tabletop storage.



A Closet Hutch offers additional shelf and drawer space.



Smooth-sliding Drawers are available in 6" and 10" heights.



Sliding Tie Racks and Belt Racks provide easy access to accessories, while a Valet Rod holds items aside.



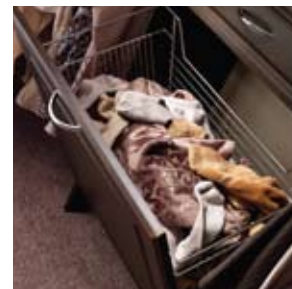
Crown Moulding gives a custom cabinet look.



A Jewelry Tray adds a touch of luxury.



Chrome Shoe Fences add a subtle shine to shoe storage.



A Pull-Out Hamper keeps laundry items out of sight.

The latest color trend



Satin Chrome is ClosetMaid's new wire finish available to builders and homeowners. Providing an alternative upgrade to white wire systems for homeowners looking for a more sophisticated finish, Satin Chrome complements modern stainless steel kitchens. The 5/8" wire spacing of Close Mesh shelving provides excellent stability and prevents cans and jars from tipping.



Satin Chrome finish is available in both traditional fixed mount and SuperSlide.

Satin Chrome

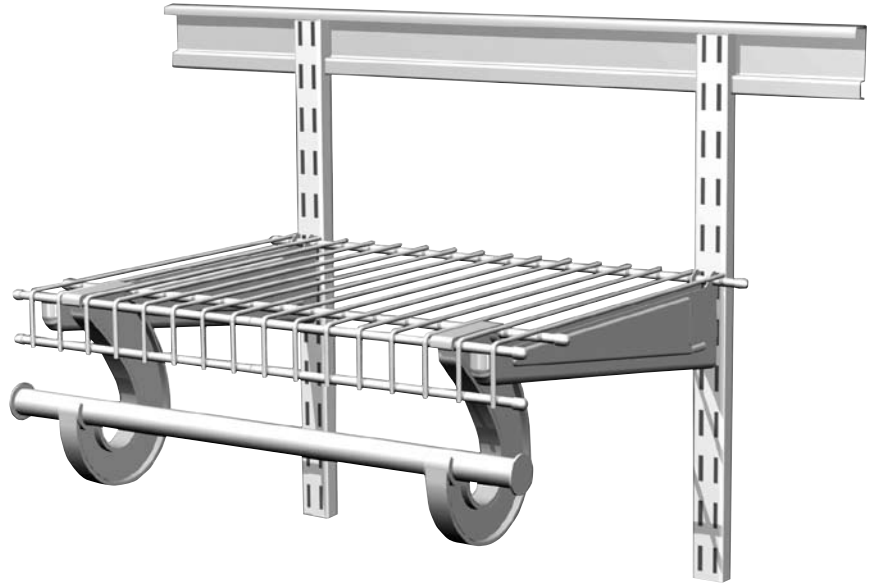


ClosetMaid's versatile shelving and organization products maximize space in every room of the home, from closets, to kitchens, to garages. Satisfy homebuyer demand for customization with shelving that's designed to meet specific needs.



The elegance and versatility of wire

ClosetMaid offers a choice of two mounting systems for wire shelving. Both are designed to install quickly, either before or after the carpeting goes in, providing greater scheduling flexibility.



The adjustable, easy-to-install ShelfTrack system provides versatile storage in closets, pantries and garage. Use as a standard feature or upgrade. Homebuyers can easily add shelving to the system.



The original, economical mounting system can be configured to fit any space or storage need.



SuperSlide shelving is a great all-purpose shelf. The addition of SuperSlide hardware provides closet rods with unobstructed sliding hanger action. Corner shelves and rounder bars maximize space in walk-in closets. Upgrade the look with wood shelf fronts and chrome closet rods. Available in 12" and 16" depths.



TotalSlide



SuperSlide

TotalSlide shelving offers one-piece installation with unobstructed hanger sliding action. The lip design features a low-profile, linen-style configuration that allows more cutting flexibility and reduces scrap. Available in 12" and 16" depths.

Close Mesh shelving has deck wires that are 5/8" apart instead of the standard 1". It's the preferred shelving for pantry, linen and bath installations, as the closer deck wires prevent small items from slipping through. Close Mesh shelving is available in 6", 9", 12" 16" and 20" depths.



Shelf & Rod



Close Mesh

Shelf & Rod with 12" of hanger glide, is the most economical shelving option in the ClosetMaid line and is available in 10", 12" and 16" depths.

The Linen shelving category provides additional depths of all-purpose shelving that can be used in any room. 6", 9", 20" and 12" double lip.

A convenient solution for any room



MultiSuite is available in 3 finishes: Hammered Grey, Clean White Raised Panel and Flat Front.

MultiSuite storage systems come with all the quality consumers expect from ClosetMaid. Hammered Grey and White Raised Panel systems are powder-coated for a stain, scratch, and chip-resistant finish. Plus MultiSuite Storage Systems are raised off the floor for easier cleaning.



MultiSuite™

Tailored to your needs, a MasterSuite Garage System gives you peace of mind knowing that everything is orderly and in its place, protected from dirt, dust, stains and moisture. Offering 3/4" material with a thermal-fused melamine finish, heavy-duty edge banding, attractive chrome handles, full-cabinet back-panels, adjustable legs and European-style hinges, a MasterSuite Garage System can be personalized even more with a wide variety of ClosetMaid racks, hooks and tool holders.



Heavy-duty Maximum Load shelving is ideal for garage or basement storage, supporting up to 600 lbs per six-foot shelf. Available in 16" depth.



Now homeowners can get what they want most in a garage – a system that provides more storage space and a strong sense of order, with a finished, custom look that complements the rest of their home.

MAXIMUM LOAD®

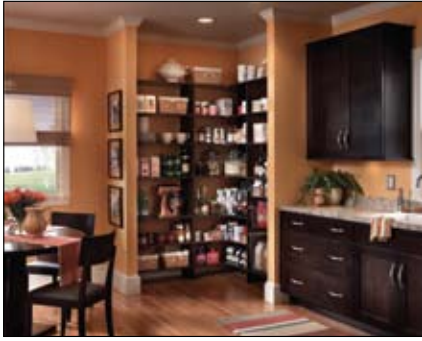
Garage

MasterSuite



The ShelfTrack mounting system has been combined with MasterSuite laminate components to produce storage systems offering easy installation, adjustability and an attractive, upscale look that will impress home buyers. Available in all MasterSuite finishes. Add matching wood fronts and chrome poles to create storage areas with a luxurious, custom look.





Laminate Pantries



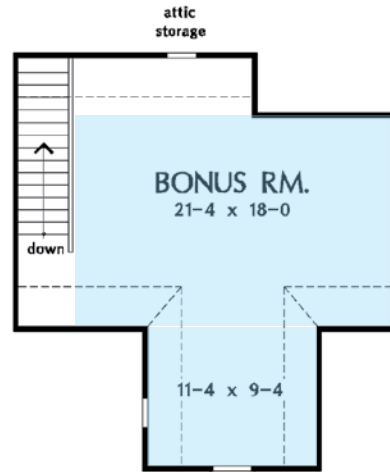
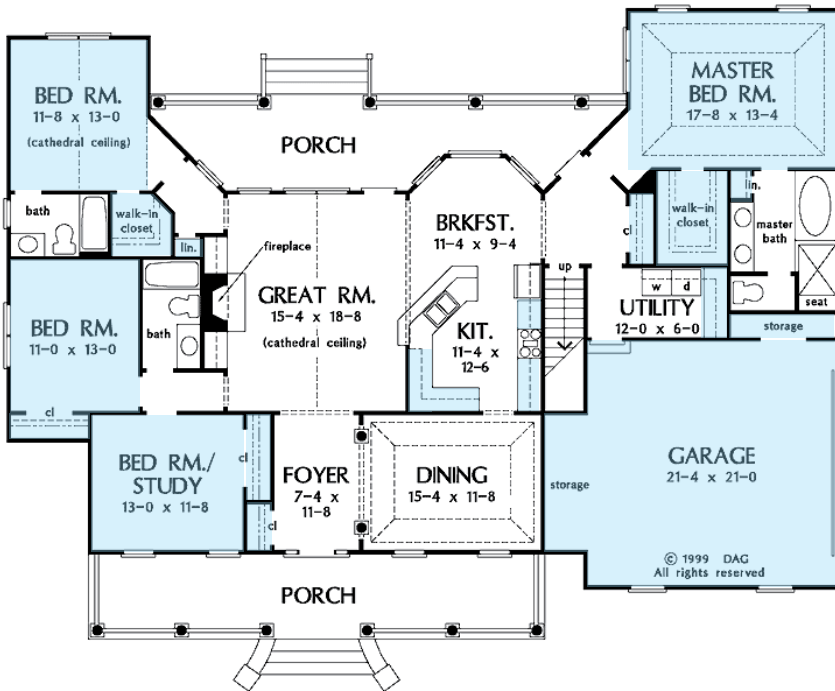
ProCuisine Cabinet Organizers



Mudroom / Entry

PRO

Professional Room Organization



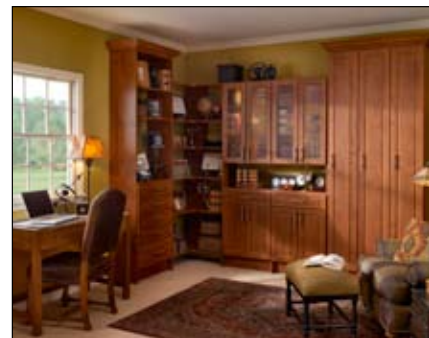
Utility Closets



Home Office



Entry Way



Study

Affordable storage for every room of the home



As the leader in storage and organization, we've built our reputation on quality and affordability. All ExecutiveSuite systems feature raised panel drawers and doors. Partitions and shelves are a sturdy 3/4 inch to hold books and office equipment.

When it comes to designing and installing beautiful, durable and functional office systems for executives, entrepreneurs and professionals, even for those who work from home, ExecutiveSuite is all business.



Works wherever you do

ExecutiveSuite[™]



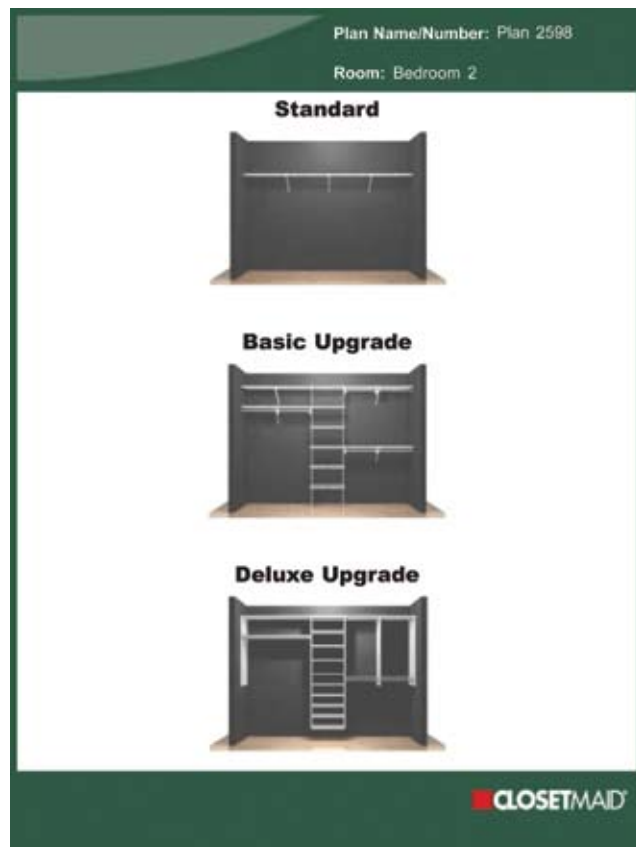
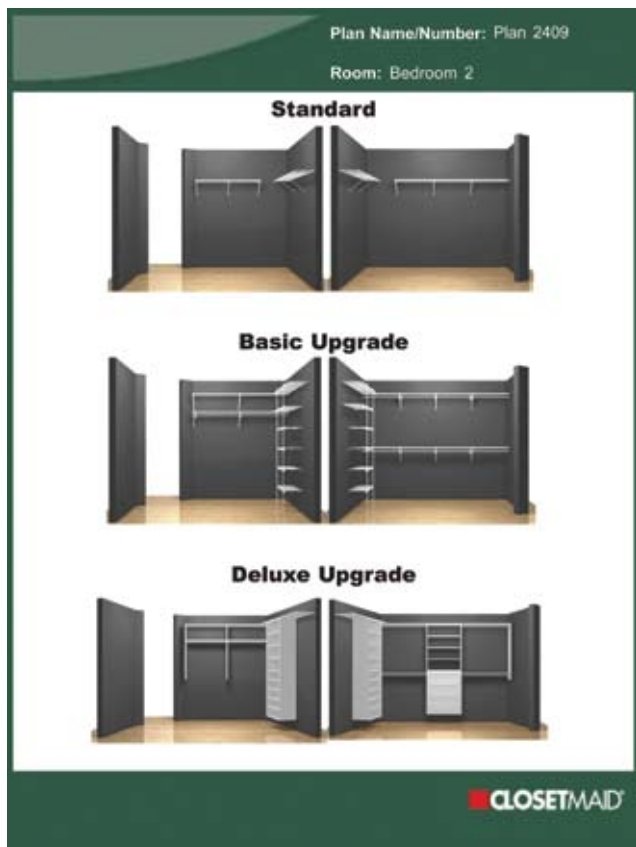
These restaurant-grade organizers provide access to items stored in the back of lower kitchen cabinets. Organizers slide out easily, so everything is visible and easily retrieved.



ProCuisine kitchen organization products include spice racks, tray sliders, trash bin sliders, and dish organizers. Quickly organize kitchen cabinets, pantries, and much more.



A customized presentation binder created specifically for each of your developments shows home buyers standard, basic upgrades, and deluxe upgrades. This professional presentation is available at no cost.



For more information or to find your nearest ClosetMaid Authorized Dealer, visit www.closetmaid.com, where you'll find everything construction professionals--and homebuyers--want to know about closets.

- Glamour Photos
- Product Specifications
- Homebuyers Section
- Installing Dealer Section
- Closet Idea Gallery
- Installation Tips & Assistance
- Live Chat
- Professional Design Service
- Product Catalog
- Closet Design Elements
- Visual Storage Planner 3D Design Tool



650 SW 27th Ave.
Ocala, FL 34471

© ClosetMaid Corporation 2008

04-12438 (Rev. 12/08)



If a ClosetMaid product does not give the user complete satisfaction when installed in accordance with the manufacturer's instructions, it will be exchanged free of charge. Please note that only the unsatisfactory part in a multi-piece product will be exchanged.